



MDS3030K16+MD30-AIRWAYPKG

M-SERIES TALL TREATMENT CART with MD30-AIRWAYPKG Difficult Airway Package

MD30-AIRWAYPKG Accessories Include:



Oxygen tank holder (O2HLDR)



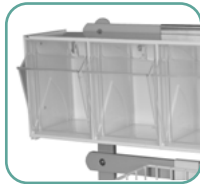
(2) Utility hooks (UHOOKS2)



(1) 16" Side Rail (SIDERAIL16)



Adjustable Overhead Shelf (MD30-ADJSHLF2)



5-Compartment Tilt Bin w/Rail Clips (TILTBIN5RC)



4-Scope Capacity Side Scope Cabinet (680350)

M-series

Drawer Configuration:

- 24.5" W x 17" D (62.2 x 43.2 cm)
- Four 3" drawers (7.6 cm), one 6" drawer (15.2 cm) & one 12" drawer (30.5 cm)

Assembled Cart Dimensions:

- 66.75" H (max height) x 41.25" W x 22" D with accessories (169.5 cm H x 104.78 cm W x 55.9 cm D)
- Cart weight: 208 lbs (94.35 kg)
- Approximate shipping weight: 248 lbs (112.49 kg)
- Approximate Shipping Dims: 56" H x 37" W x 26" D (142.2 cm x 94 cm x 66 cm)

Warranty: 12-Year Manufacturer's Warranty, 1-Year Limited Warranty on any bought-out parts

Color shown is Navy. More than 20 additional colors are available.

Engineered & Manufactured in the U.S.



Features:

- Sturdy, uni-body steel construction
- Choice of lock options: www.harloff.com/locking-options/
- Durable scratch resistant heat sealed powder coat finish
- Full extension drawers slides for easy access
- Body has pre-threaded accessory mounting holes
- Industry only fully curved protective bumper
- Aluminum side rail/push handle mounted on one side
- Industry best 5" quiet rolling Tente® casters - 1 steering caster and 1 braking casters
- Antimicrobial plastic top, removable
- Fully customizable drawer configurations
- 30" of vertical drawer space
- Cart is latex free and delivered assembled



HARLOFF
INNOVATING STORAGE FOR CARE

View similar products online at
<https://www.harloff.com/product-category/anesthesia-carts/>

Toll Free: (800) 433-4064 • Ph: (719) 637-0300
medicalsales@harloff.com • www.harloff.com