



## HEAT SEALED POWDER COAT STEEL 16 SCOPE CAPACITY CABINET, E-LOCK

Scopes  
not included

**SC8036DREDP**

### Scope Cabinet Features:

- Meets or exceeds Joint commission, AORN, SGNA, and AAMI guidelines.
- Positive pressure fully redundant fan system
- Industries only unit with 3 intake and 2 exhaust fans
- Fan run time is fully adjustable and activated each time cabinet is closed
- HEPA filter removes 99.7% of particulates, .03 Microns
- Industry first replaceable HEPA Filter system without removal of scopes
- Holds 16 scopes with secure adjustable mounting system
- Medical grade electrical system
- Tempered glass double doors
- Easy to clean removable drip tray

*Optional dimmable LED lighting also available!*

The Sure-Dry Scope Cabinet includes the industry best Positive Pressure HEPA Filtered Drying system. Inside air is replaced inside the cabinet 4 times per minute.

Simple "Plug and Play" upgradeable with Dri-Scope Aid®, industry leading internal lumen drying system

**HARLOFF**  
INNOVATING STORAGE FOR CARE

Engineered &  
Manufactured  
in the U.S.



View similar products online at  
<https://www.harloff.com/suredry-scope-cabinets/>

Toll Free: (800) 433-4064 • [medicalsales@harloff.com](mailto:medicalsales@harloff.com)  
[www.harloff.com](http://www.harloff.com) • Ph: (719) 637-0300



# STAINLESS STEEL 16 SCOPE CAPACITY CABINET, E-LOCK



**SureDry**  
SCOPE CABINETS

**SCSS8036DREDP**

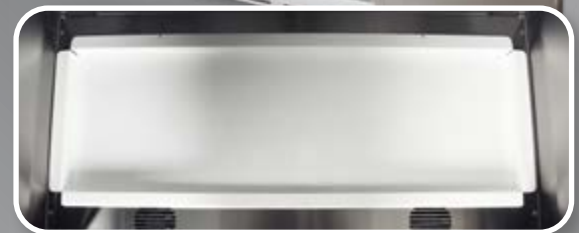
Scopes  
not included

## Scope Cabinet Features *(continued)*:

- Multiple locking options available including badge entry
- Scope cabinets are delivered fully assembled
- Harloff has Industry Best 12 year manufacturer's warranty for Sales to US and Canada
- Overall cabinet dimensions:  
93"H x 36"W x 24"D

## Color Options:

- Stainless Steel
- Heat sealed powder coat low carbon steel, available in over twenty color options
- View colors online:  
<https://www.harloff.com/finish-options/>



**HARLOFF**  
INNOVATING STORAGE FOR CARE

Engineered &  
Manufactured  
in the U.S.



View similar products online at  
<https://www.harloff.com/suredry-scope-cabinets/>

Toll Free: (800) 433-4064 • [medicalsales@harloff.com](mailto:medicalsales@harloff.com)  
[www.harloff.com](http://www.harloff.com) • Ph: (719) 637-0300

## Timer:

- Timer sets drying time with both doors closed, and resets when doors open.



- Default is 90 minute runtime, but can be set from 10 minutes to 180 hours.

# Why is a positive pressure system important?

The unique design of the SureDry Scope Cabinet includes both top fans for intake and lower fans for exhaust. This push/pull design creates a vortex of air that flows through the cabinet ensuring maximum drying efficiency.

## Intake:

Intake Airflow comes through 3 Separate HEPA filters (removes 99.7% of particulates, .03 Microns) driven by 3 fully redundant fans producing a positive pressure vortex from the top of the cabinet. This creates a circular motion of airflow evenly over all scopes.

## Exhaust:

The lower exhaust fans pull the circulated air out of the cabinet ensuring the flow of air is consistent from top to bottom, providing a complete drying system for the entire scope. This push pull multiple fan system, an industry first, ensures not only a positive pressure system to meet all major guidelines but also ensures forced drying and equal levels across each and every scope across it's full length.



*A Smart Choice to Meet & Exceed Current AORN, SGNA and AAMI Guidelines*

Scope Storage Guidelines	Forced Air Drying	HEPA Filtered Air	Hang Scopes Vertically	Scopes Must Hang Freely, No Touching or Coiling	Easy to Clean and Disinfect	Closed Door Cabinet	Positive Air Pressure	Circulated Air Environment	Connectors — Use Disposables or Reusables Stored w/Scopes	Dry Scopes Completely	Use Channel Drying*
<b>AORN</b>	no data	✓	✓	✓	✓	✓	✓	✓	✓	no data	no data
<b>SGNA</b>	✓	✓	✓	✓	✓	no data	no data	no data	✓	✓	no data
<b>AAMI</b>	✓	✓	✓	✓	✓	✓	✓	✓	✓	✓	✓

**Harloff Scope Cabinets** Meet & Exceed These Guidelines (\*Channel Drying Available Only with Dri-Scope Aid®)

# 10 Reasons to Choose **HARLOFF** for Your Scope Cabinets

A Smart Choice to Meet & Exceed Current SGNA, AORN and AAMI Guidelines



1

**Industry Best Positive Pressure HEPA Filtered Drying System.** Designed to add Dri-Scope Aid® now or later with easy “Plug & Play installation.

## Proudly Made in the USA

6



Harloff products are proudly **Designed, Engineered and Manufactured in the United States** at our Colorado Springs, CO facility.

## Dri-Scope Aid®

2

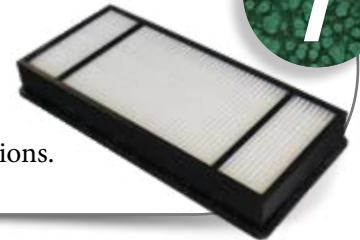
### Fully Retrofittable in Field

All SureDry scope cabinets are fully designed to be field installed with the industry best Dri-Scope Aid® lumen drying system, which provides HEPA filtered air to each internal scope channel.

## Easy Access to HEPA Filters

7

Change HEPA filters **without opening the cabinet.** Save time and ensure no cycle interruptions.



## LED Lighting Option

3

**Brighten your cabinet** and easily inspect scopes with fully dimmable optional overhead LED lighting which triggers on door open/close.



## Keyed or Keyless Locks

8

**Options include** key locks, basic electronic push button locks, advanced keypads and proximity readers. View locking options online at [www.harloff.com/locking-options/](http://www.harloff.com/locking-options/)



## Hooks and Holders for Specialized Scopes

4

Major brands to include **Fuji, Olympus, Pentax, Karl Storz and others.**



## Scope Cabinet Finish Options

9

Choose Stainless Steel, Heat Sealed Powder Coat in High Gloss or Textured Low Gloss, or upgrade to an **antimicrobial finish.**

## 12 Year Warranty

5

**Our Manufacturer's Warranty is Unmatched** in the industry. We build our cabinets to last and we stand behind them.



## Superior Color Choices

10

**Over 20 Colors** to choose from. Cabinets have a heat sealed powder coat finish inside and out. View color options online at [www.harloff.com/finish-options/](http://www.harloff.com/finish-options/)